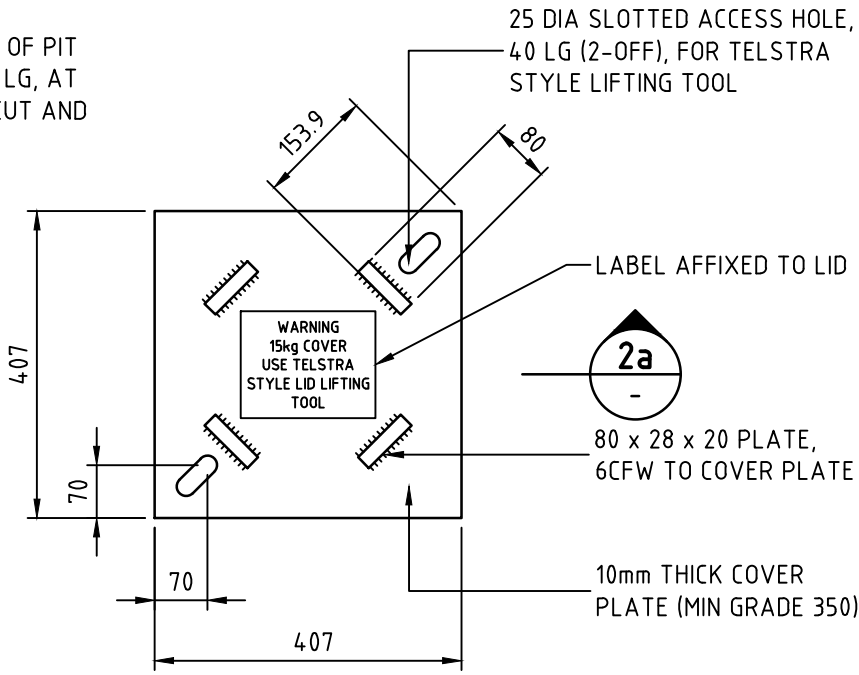
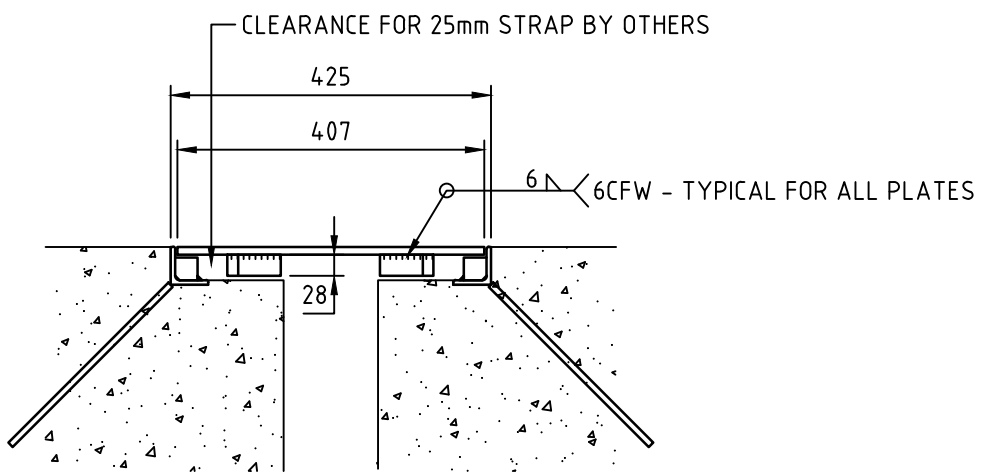


**FRAME #2 - PLAN**  
SCALE 1:10 AT A3



**COVER PLATE #2 - PLAN**  
SCALE 1:10 AT A3

WEIGHT = 15kg



**SECTION 2a**  
SCALE 1:10 AT A3

**NOTE**

1. ALL DIMENSIONS ARE IN MILLIMETRES (mm)
2. THIS DESIGN IS FOR THE STEEL ANGLE SURROUND AND COVER PLATE ONLY (CONCRETE PIT IS NOT PART OF THE DESIGN).
3. ALL STEEL WORK TO BE GRADE 350 MINIMUM.
4. ALL DIMENSIONS SHOWN ARE TO BE CONFIRMED ON SITE PRIOR TO ANY FABRICATION.
5. THE COVER PLATE AND CAST-IN FRAME HAS BEEN DESIGNED FOR TRAFFICABLE LOADS AS LISTED BELOW:
  - 5.1. AXLE LOAD = 3 tonne MAXIMUM
  - 5.2. WHEEL LOAD = 1.5 tonne MAXIMUM



		Drawn:		Designed: Northrop	
		Checked: C. Desai			
		Approved: W. Ibrahim		1/12/2017	
		Project No:			
A	LOGO AND REFERENCES UPDATED	18/03/2018	B. Suthar	W. Ibrahim	
No	Revision	Date	Checked	Approved	
The information contained within this drawing & associated electronic file shall remain the property of Evoenergy and shall not be copied or used for any other purpose without express written permission from Evoenergy. © Evoenergy. 2018.			ACT Cadastral information supplied by the ACT Environment & Sustainable Development Directorate. © ACT Gov. 2018.		

**evoenergy**

CHAMBER SUBSTATION  
FLOOR PENETRATION COVER PLATE  
HV TRANSFORMER TAILS

Scale:	Date:	Sheet No:
Work Pack No:	File:	
Status: Current		
<b>A3</b>	<b>4931-14</b>	Rev A