

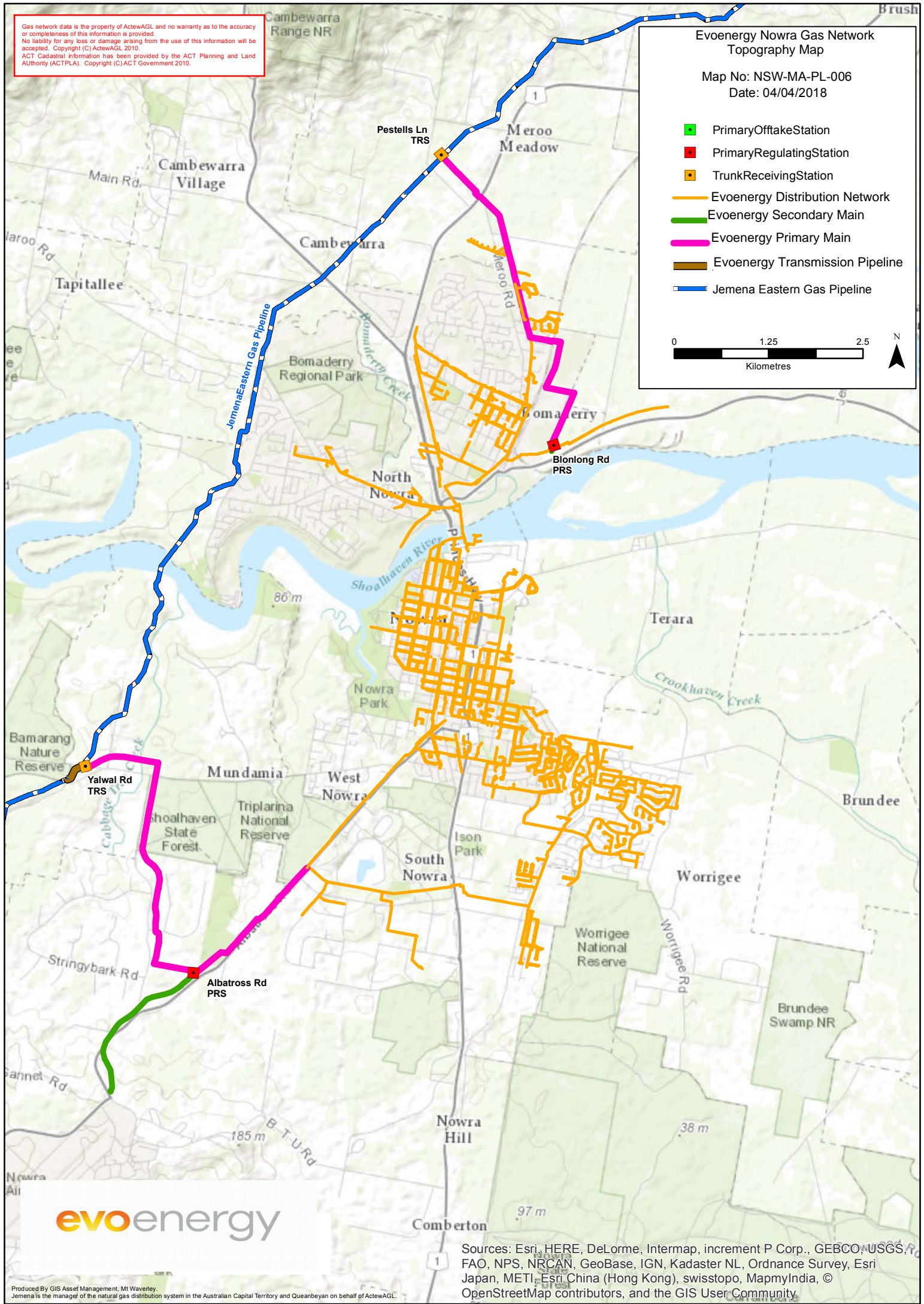
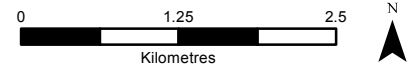
Gas network data is the property of ActewAGL and no warranty as to the accuracy or completeness of this information is provided.  
No liability for any loss or damage arising from the use of this information will be accepted. Copyright (C) ActewAGL 2010.  
ACT Cadastral information has been provided by the ACT Planning and Land Authority (ACTPLA). Copyright (C) ACT Government 2010.

# Evoenergy Nowra Gas Network Topography Map

Map No: NSW-MA-PL-006

Date: 04/04/2018

- PrimaryOfftakeStation
- PrimaryRegulatingStation
- TrunkReceivingStation
- Evoenergy Distribution Network
- Evoenergy Secondary Main
- Evoenergy Primary Main
- Evoenergy Transmission Pipeline
- Jemena Eastern Gas Pipeline



evoenergy

Sources: Esri, HERE, DeLorme, Intermap, increment P Corp., GEBCO, USGS, FAO, NPS, NRCAN, GeoBase, IGN, Kadaster NL, Ordnance Survey, Esri Japan, METI, Esri China (Hong Kong), swisstopo, MapmyIndia, © OpenStreetMap contributors, and the GIS User Community