



Natural gas safety tips.

Help us keep you safe.

evoenergy

How to choose, install and maintain natural gas appliances

1. Choosing appliances

When buying gas appliances, ensure they are approved by an Australian certifier, such as the Australian Gas Association (AGA) and look for built-in safety features such as:

- anti-tilt switches
- automatic ignition systems
- a flame failure device to cut off the natural gas if the flame is accidentally extinguished
- adjustable temperature control to reduce the chance of scalding.

2. Installing appliances

Only use licensed gas fitters for installation. They must comply with gas safety legislation and install appliances in accordance with the Australian Standard AS5601; Gas Installations.

3. Maintaining appliances

Natural gas appliances, such as hot water systems or heaters, should be checked and maintained annually by a licensed person in accordance with the manufacturer's guidelines. Always ask for a written report of the work undertaken.



You should also:

- check appliances regularly for evidence of discolouration or soot deposits
- ensure there is ventilation around appliances and that flue pipes are not restricted.

For more gas appliance safety information contact Access Canberra or a licensed gas fitter.

Use natural gas heaters safely

Never

-  dry clothes, or leave paper or flammable material on or too close to heaters
-  leave a heater on overnight or when no one is home.

Unflued gas heaters require permanent ventilation. Ensure a door or window is open so fresh air can circulate.

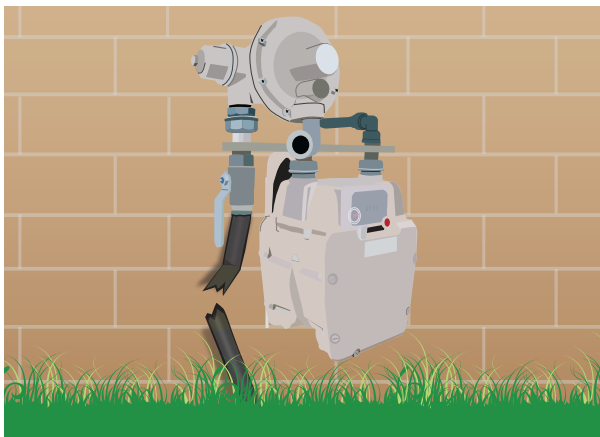
In an emergency

In the event of an emergency, such as a gas leak or bushfire, turn off the natural gas supply at the meter – see over.

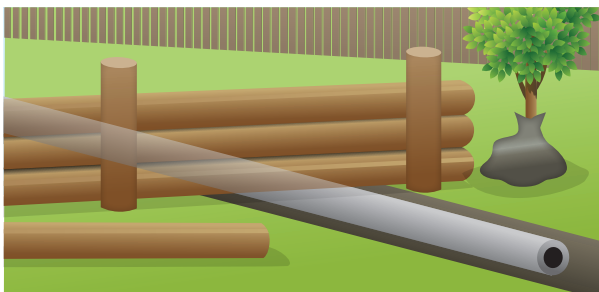
Damage to gas meters or pipes

Damage to gas meters and underground pipes can create dangerous safety hazards and disrupt the gas supply.

If you see damage to gas equipment such as meters or pipes call Evoenergy's 24-hour gas emergencies and faults line on **13 19 09**.



When gas meters and pipes are damaged, gas can leak out and ignite.



Never build retaining walls or plant trees over gas pipes, water mains, sewerage pipes or electricity cables.

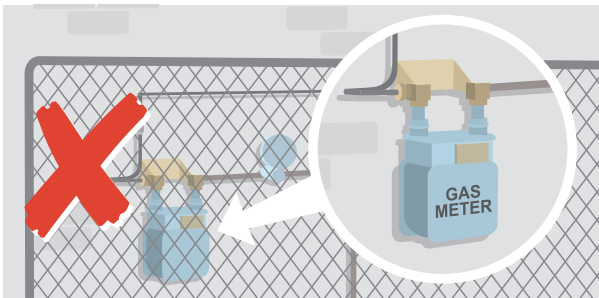
If you're renovating or landscaping

Always consider the location of gas pipes when planning to renovate or landscape. Before you plan a job call Dial Before You Dig on **1100** or visit **1100.com.au** to find out what services are on and around your block.

How to maintain your natural gas meter

Keep natural gas equipment, such as meters and pressure regulators, free from damage and interference.

Routinely check to make sure your meter is accessible and free from leaf litter, plants and other combustible material that could be a fire hazard. Access must be unobstructed to allow the meter to be read.



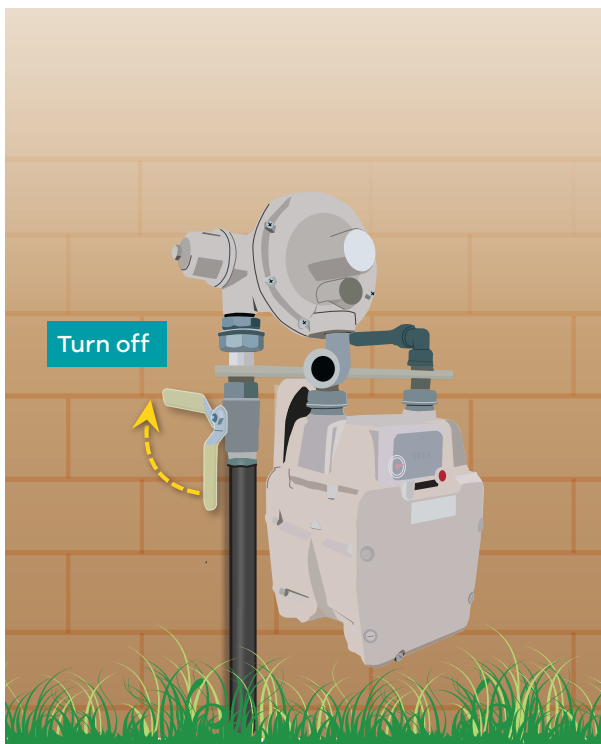
Never build over or restrict access to gas, water or electricity meters.

What to do if you smell gas

Natural gas has no odour. To help you detect the presence of gas, a strong odourant that smells like rotten eggs is added.

If you smell gas:

1. ensure gas appliances are turned off
2. open windows and doors
3. remove sources of ignition
4. leave the premises and turn off the main gas tap at the meter by turning the yellow valve lever so it runs at right angle to the pipe – see illustration
5. call Evoenergy's 24-hour gas emergencies and faults line on **13 19 09**.



evoenergy.com.au

General enquiries

13 23 86

Emergencies and faults

13 10 93 – Electricity

13 19 09 – Natural gas

Language assistance

如果您需要幫助，請打電話給下面的號碼。

¿Necesita un intérprete? Llame al número indicado abajo.

هل تحتاج إلى مترجم؟ اتصل بالرقم أدناه.

Trebate li pomoć tumača? Nazovite niže navedeni broj.

Nếu quý vị cần sự giúp đỡ, vui lòng gọi số bên dưới.

Se vi serve un interprete, telefonate al seguente numero.

Αν χρειάζεστε διερμηνέα, τηλεφωνείτε στον αριθμό παρακάτω.

13 14 50 – 24 hours