



Building near utility assets.

Some things you need to know to avoid unwanted costs and accidents.

evoenergy

icon
WATER

When planning.

When planning to build anything from a new house to an extension, pergola, swimming pool, garden or retaining wall, check what Evoenergy assets and Icon Water assets are on and around your block.

Utility assets include:

- meters
- manholes
- poles
- gas, sewerage and water pipes
- hydrants
- cables
- wires
- connections
- substations
- valves.

Contact Dial Before You Dig

It's easy and free to find out what's underground. Simply contact Dial Before You Dig and tell them your block location. They will pass the referral to the relevant services, who will send the information to you, generally within two working days.

There are two ways to lodge your enquiry:

- complete an online form at 1100.com.au
- call 1100.

Minimum clearances

The law prohibits a person from interfering with utility assets, for example by blocking access or building too close or on top of assets. Evoenergy and Icon Water requires that poles, manholes and meters have at least 1.5 metres of clearance. To find out more about Evoenergy assets call 02 13 23 86. To find out more about Icon Waters Assets call 02 6248 3111.

Fines and removal

If you build a structure that is too close to, or interferes with Evoenergy or Icon Water infrastructure, you may have to pay for it to be removed and you could face penalties under the *Utilities (Technical Regulations) Act*.

It's your responsibility

It's the responsibility of all land-owners and occupiers to ensure there are no interferences to utility assets. If you engage a draftsman, builder, architect or landscaper, you may be held responsible if they fail to comply with minimum clearances or damage Evoenergy or Icon Water assets. Make sure they include these checks in your project.

Think outside your block

When building swimming pools or other structures, always consider services and substations outside your block. Minimum distances and other factors still apply.

Safety

If you hit an underground pipe or cable, it could be expensive and dangerous. Keep yourself and your family safe. Contact Dial Before You Dig and don't build too close to poles, pipes or wires. See minimum clearances mentioned on page 2.

More information

To find out what's underground contact Dial Before You Dig. Complete an online form at 1100.com.au or call 1100.

To check the required distances from powerlines call 13 23 86. To check the required distance from sewerage pipes and water mains call 02 6248 3111 (Option 3).



Never build over or close to pipes and cables.



Never attach structures to poles.



Avoid paving or cementing around the base of a pole, or building retaining walls next to poles.



Never build too close to powerlines.



Never obstruct access to poles with rainwater tanks. When installing tanks under powerlines, ensure that the minimum clearances are met.



Never obstruct manholes.



Never build over or obstruct access to water, gas and electricity meters.



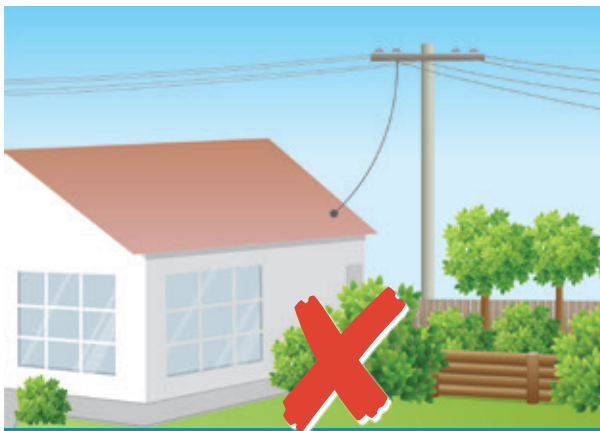
Avoid building retaining walls or planting trees over water mains, sewerage or gas pipes, or electricity cables.



Never let vegetation, rock gardens or other landscaping obstruct access to substations or other electrical equipment.



Never build swimming pools close to electrical services or water or sewer mains, even if they are in a laneway or outside the fence.



Never block access to utility infrastructure on your property. Evoenergy and Icon Water must have enough space to bring in equipment to repair network mains and access service connections.



Never dig holes without finding out where sewer, water or gas pipes or electricity cables are located.



Never lock gates or obstruct access to gas, electricity or water meters. Gates, fences or walls should be located to the rear of any meter.



Never obstruct fire hydrants. In the event of a fire, emergency personnel may require access. Hydrants may also be used by Icon Water or authorised parties to draw water from the network.

evoenergy.com.au

More information

For more information about building new utility assets visit evoenergy.com.au
iconwater.com.au/buildingandrenovation

General enquiries

13 23 86

Emergencies and faults

13 10 93 – Electricity

13 19 09 – Natural gas

13 19 93 – Water, sewerage and stormwater

Language assistance

如果您需要幫助，請打電話給下面的號碼。

¿Necesita un intérprete? Llame al número indicado abajo.

هل تحتاج إلى مترجم؟ اتصل بالرقم أدناه.

Trebate li pomoć tumača? Nazovite niže navedeni broj.

Nếu quý vị cần sự giúp đỡ, vui lòng gọi số bên dưới.

Se vi serve un interprete, telefonate al seguente numero.

Αν χρειάζεστε διερμηνέα, τηλεφωνείτε στον αριθμό παρακάτω.

13 14 50 – 24 hours

evoenergy

icon
WATER