

# STREETLIGHT SUPPLY CONNECTIONS APPROVAL PROCEDURE

---

THIS DOCUMENT IS APPLICABLE TO ALL PROPOSED CHANGES TO TRANSPORT CANBERRA AND CITY SERVICES EXISTING STREETLIGHT NETWORK THAT IS SUPPLIED BY EVOENERGY'S ELECTRICITY NETWORK. IT EXCLUDES GREENFIELD DEVELOPMENTS.

# CONTENTS

---

<b>1. SCOPE</b>	<b>3</b>	<b>5. ENABLERS</b>	<b>6</b>
<b>2. PURPOSE</b>	<b>3</b>	<b>VERSION CONTROL</b>	<b>6</b>
<b>3. PROCEDURE STEPS</b>	<b>3</b>	<b>DOCUMENT CONTROL</b>	<b>7</b>
3.1 Business Risk Identification	3		
3.2 Procedure Step Flow Chart	4		
3.3 Procedure Step Detail	5		
<b>4. DEFINITIONS AND ABBREVIATIONS</b>	<b>6</b>		

## 1. SCOPE

---

This document is applicable to all proposed changes to Transport Canberra and City Services (TCCS) existing streetlight network that is supplied by Evoenergy's electricity network. It excludes Greenfield developments.

This procedure applies to additions and circuit augmentations/modifications that result in additional load of > 5A per phase to the Evoenergy network.

For clarity, where TCCS undertakes additions and circuit augmentations/modifications and there is no resultant additional load > 5A per phase to the Evoenergy network, TCCS can complete their construction work without requesting approval from Evoenergy. TCCS will need to request de-energisation and re-energisation of streetlight controllers (where necessary) as a part of managing their construction works.

## 2. PURPOSE

---

The purpose of this procedure is to provide a consistent approach to the application and processing of streetlight connection requests.

## 3. PROCEDURE STEPS

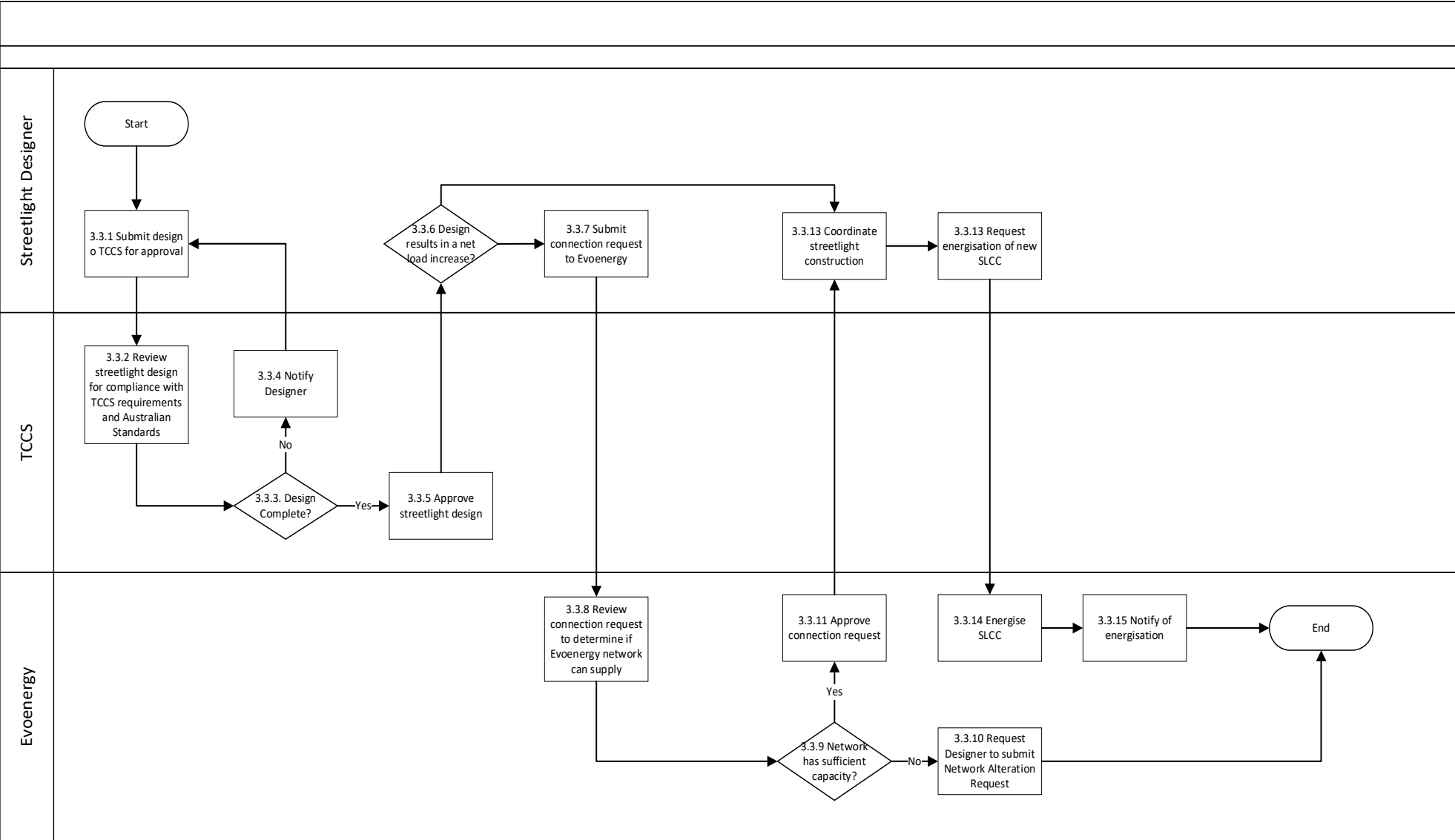
---

### 3.1 Business risk identification

Supply quality issues can impact on the ability of TCCS' streetlights to operate and provide adequate lighting levels in accordance with their compliant design.

The application of this procedure mitigates supply quality issues (typically voltage drop issues) by ensuring Evoenergy's network connection is assessed and confirmed suitable to supply the increased load.

### 3.2 Procedure step flow chart



### 3.3 Procedure step detail

Process No	Task	Responsible Person
3.3.1	Submit streetlight design to TCCS for approval with the relevant TCCS document(s)	Streetlight Designer
3.3.2	Review streetlight design for compliance with TCCS requirements and Australian Standards	TCCS Streetlight & Asset Acceptance Coordinator
3.3.3	Does the streetlight design comply with TCCS requirements and Australian Standards	TCCS Streetlight & Asset Acceptance Coordinator
3.3.4	If the streetlight design doesn't comply, TCCS to notify the Streetlight Designer on what basis the design is non-compliant	TCCS Streetlight & Asset Acceptance Coordinator
3.3.5	Notify the Streetlight Designer that the streetlight design is compliant	TCCS Streetlight & Asset Acceptance Coordinator
3.3.6	Does the additional/removal/replacement of streetlight result in a circuit(s) net load increase of greater than 5A/phase? If no, the Streetlight Design does not need to obtain connection approval from Evoenergy.	Streetlight Designer
3.3.7	Submit a Connection Request to Evoenergy (Streetlight.Approvals@evoenergy.com.au) with the following information: <ul style="list-style-type: none"> <li>Location and asset number(s) of proposed and/or existing SLCC(s)</li> <li>New streetlight quantities and types of luminaires (including current ratings)</li> </ul>	Streetlight Designer
3.3.8	Determine if existing Evoenergy network can supply the augmented load without network alteration	Evoenergy – Project Engineer
3.3.9	Can the existing Evoenergy network supply the augmented load without network alteration?	Evoenergy - Project Engineer
3.3.10	Notify the Streetlight Designer that they need to submit a Network Alteration Request to Evoenergy (Complex.Network.Connections@evoenergy.com.au) as the existing network cannot supply the augmented load without network alteration/augmentation	Evoenergy - Project Engineer
3.3.11	Provide approval to the Streetlight Designer	Evoenergy - Project Engineer
3.3.12	Coordinate streetlight construction	Streetlight Designer
3.3.13	Request energisation of new SLCC	Streetlight Designer
3.3.14	Energise new SLCC	Evoenergy
3.3.15	Notify Streetlight Designer that the SLCC is energised	Evoenergy

## 4. DEFINITIONS AND ABBREVIATIONS

Term	Definition
TCCS	Transport Canberra and City Services
SLCC	Streetlight Control Cubicle
CCE	Customer Connections Engineer
Works Delivery	Evoenergy's branch responsible for streetlight field connections
Streetlight Designer	The qualified entity responsible for the streetlight design appointed by and reporting to TCCS.

## 5. ENABLERS

- Work health and Safety Regulation 2011
- AS/NZS 4801:2001 Occupational Health & Safety
- AS/NZS 3000:2007 Wiring Rules
- AS/NZS 1158 Parts 1-6 (Streetlight Design Standards)
- Evoenergy Electrical Safety Rules (Blue Book)
- Evoenergy Service and Installation Rules
- Evoenergy Application for Electricity Network Connection or Alteration
- Design Standards for Urban Infrastructure "Streetlighting Section 12"

## VERSION CONTROL

Version	Author/Editor	Description of changes	Approved by/date
6.0	Michael Lloyd	Reviewed and amended for currency	Customer Technical Services Manager
5.0	Kedar Vedanti	Removed requirement for Evoenergy to provide streetlight asset numbers	Network Connection Services Manager 30/06/17
4.0		<i>Published</i>	16/09/2016
3.0	Mathew Wass	Updated to current Evoenergy document template, reviewed and amended	
2.1	Clinton McAlister	Reviewed and amended for currency	
2.0	Stephen Mudford	Reviewed and amended for currency	Branch Manager Works Delivery
1.0	Fraser Argue	Amended	Manager Electricity Asset Management Branch 19/12/2008
Initial Issue	Anant Sing	Initial Issue	Networks & Ancillary Business Branch Manager 17/11/2000

## DOCUMENT CONTROL

---

DOCUMENT OWNER	PUBLISH DATE	REVIEW DATE
Michael Lloyd	05/10/2020	05/10/2022