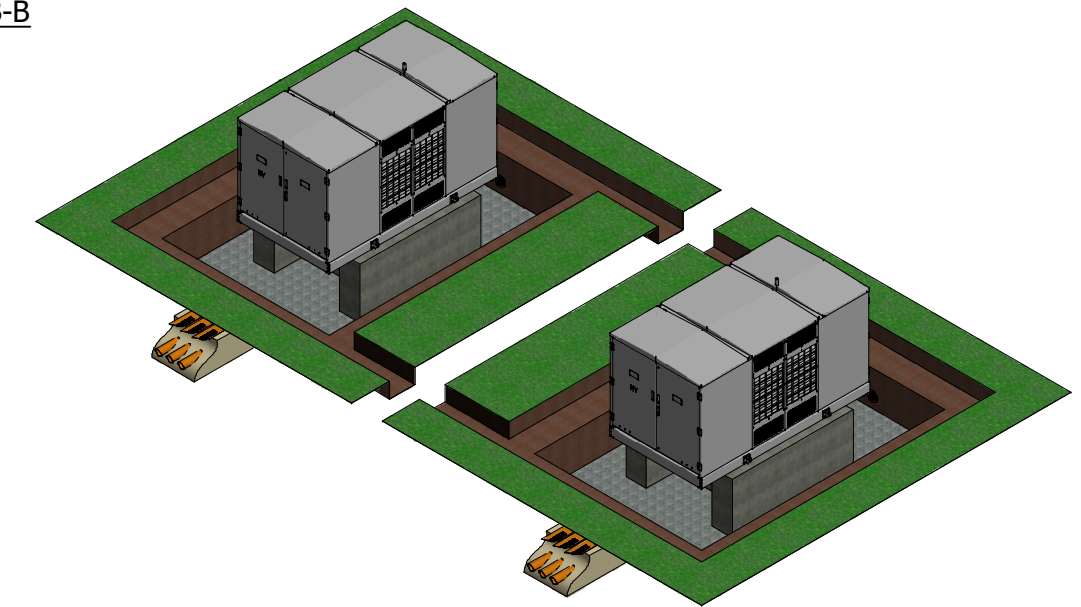
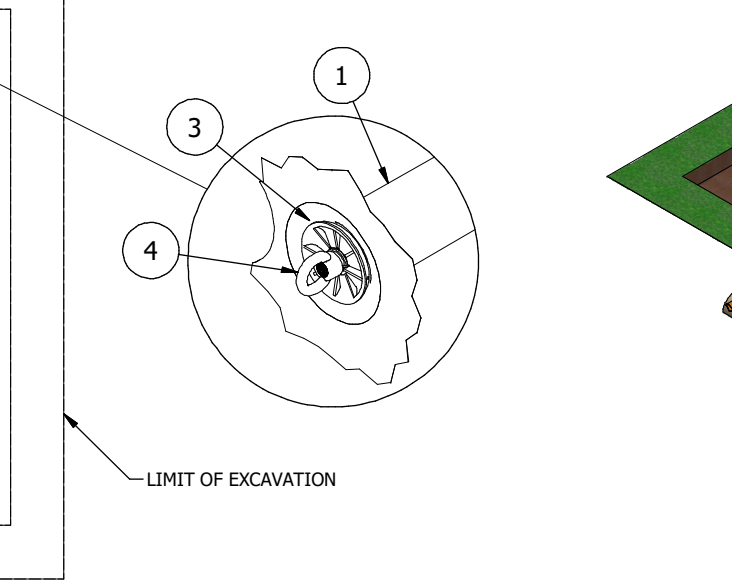
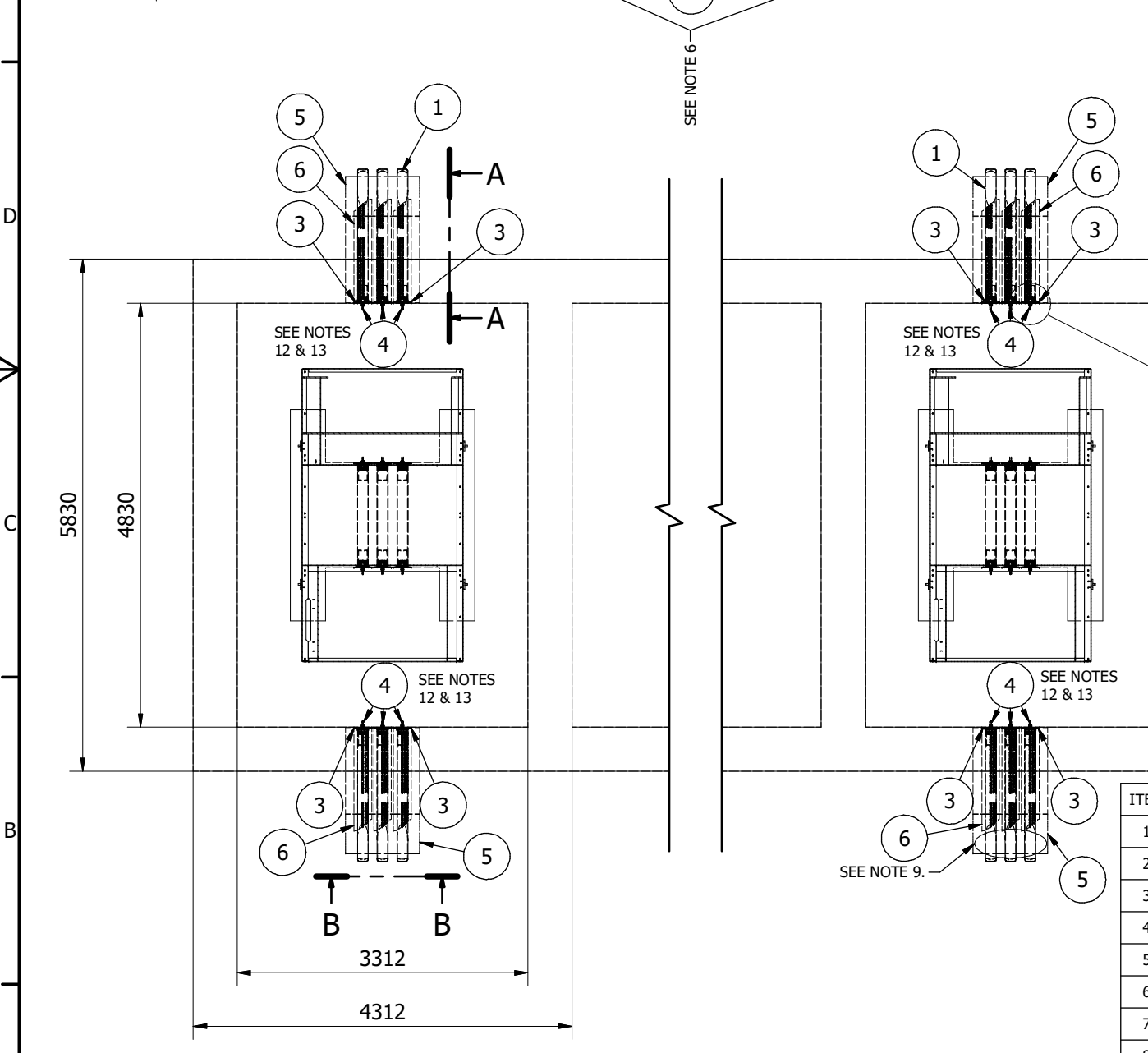
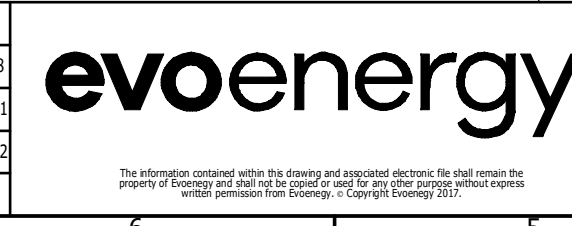


- NOTES:
1. SUBSTATIONS MAY ONLY BE CONNECTED IN A TWIN ARRANGEMENT IF NO INFRASTRUCTURE (INCLUDING BURIED INFRASTRUCTURE SUCH AS PIPES) IS LOCATED BETWEEN THE SUBSTATIONS. THIS INCLUDES WALLS AND FENCES.
 2. THIS DRAWING APPLIES ONLY TO TWIN PADMOUNT ARRANGEMENTS WHERE THE DISTANCE BETWEEN THE SIDEWALLS OF THE TWO ENCLOSURES EXCEEDS 3m.
 3. THE MAXIMUM DISTANCE BETWEEN THE ENCLOSURE SIDEWALLS IS 10m.
 4. H PLINTHS ARE SUITABLE FOR 500kVA-1500kVA PADMOUNT SUBSTATIONS.
 5. FOR H PLINTH DETAILS REFER TO DRAWING D303-0023.
 6. CONCRETE H PLINTHS TO BE FORMED AND POURED ON A 200mm THICK BASE OF FINE CRUSHED ROCK TO BE COMPACTED 100mm AT A TIME, TO 95% COMPACTION WITH MINIMUM ALLOWABLE BEARING PRESSURE OF 100kPA.
 7. TOP SURFACE OF H PLINTHS MUST BE FLAT, LEVEL AND AT THE SAME HEIGHT \pm 5mm.
 8. THE NUMBER AND ARRANGEMENT OF CONDUITS ENTERING THE EXCAVATION SHALL BE CONFIRMED DURING THE DESIGN STAGE.
 9. FOR EARTHING ARRANGEMENT DETAILS, REFER TO DRAWINGS D303-0020, D303-0021, D303-0022.
 10. ALL DIMENSIONS ARE IN MILLIMETRES UNLESS OTHERWISE SHOWN.
 11. TWIN PADMOUNT SUBSTATIONS MUST HAVE THE SAME kVA RATING.
 12. CONDUIT SEALS MUST BE USED DURING CONSTRUCTION AND LEFT TO SEAL ANY SPARE CONDUITS.
 13. CONDUIT ENDS TO HAVE BELLMOUTHS INSTALLED TO PREVENT CABLE DAMAGE.
 14. CONDUIT MUST BE ENCASED IN BEDDING SAND COMPLIANT WITH "PO07330 TECHNICAL SPECIFICATION- QUARRY PRODUCTS AND RAW MATERIALS" AND COVERED WITH POLYMERIC WARNING TAPE.
 15. ALL EXCAVATIONS MUST HAVE BACKFILL COMPACTED IN ACCORDANCE WITH "PO0793 CIVIL WORKS MANUAL VOLUME 2".



ITEM	UA TYPE	DESCRIPTION	STOCK CODE	QTY	DRAWING NO
1	P	CONDUIT, 125mm, UPVC, ORANGE, RIGID, CLASS 12 TO AS1477 OR HEAVY DUTY TO AS2053.2, 4m LENGTH	1170876	AR	D105-0032
2	P	FINE CRUSHED ROCK (ROAD BASE) AS PER EVOENERGY TECHNICAL SPECIFICATION, DELIVERED	-	AR	D109-0002
3	P	CONDUIT BELLMOUTH, PVC, FOR 125mm UNDERGROUND CONDUIT	1202955	AR	D105-0059
4	P	CONDUIT SEAL / BLANK PLUG, 125mm, FITS 125mm PLAIN AND BELL END AND BELLMOUTH ADAPTOR	1200502	AR	D105-0057
5	P	BEDDING SAND AS PER EVOENERGY QUARRY PRODUCTS AND RAW MATERIALS TECHNICAL SPECIFICATION	-	AR	D109-0004
6	P	CABLE PROTECTION COVER, UNDERGROUND, POLYMERIC, DOUBLE SIDED. 200mm WIDE, MANUFACTURED IN ACCORDANCE WITH ASNZ4702-2000	1153882	AR	D103-0140
7	S	SA, FOUNDATIONS, 500kVA - 1500kVA SUBSTATION FOUNDATION UNIVERSAL H PLINTH	-	2	D303-0023
8	I	INTERFACE, PADMOUNT SUBSTATION TO SUIT	SELECT	2	D303-0001

A	IMAGE UPDATED	JJP	WNI	6/02/2018
B	EVOENERGY BRANDING, UPDATE POLICY NUMBERS	NAA	WJC	27/01/2021
C	NOTES AND TITLE AMENDED - KV	NAA	WJC	12/08/2022
No.	DESCRIPTION	CKD	AUTH	DATE



Drawn:	3rd Dim
Designed:	J. Primmer
Checked:	J. Primmer 7/11/2016
Branch Engineer:	W. Ibrahim 18/11/2016
Branch Manager:	
Old Drawing No. and Revision:	Rev

STANDARD CONSTRUCTION, DISTRIBUTION
 UNDERGROUND, STATIONS,
 SA, FOUNDATIONS, 500kVA - 1500kVA
 TWIN PADMOUNT 3m - 10m SEPARATION
 SUBSTATION FOUNDATION

Scale:	Date:	Sheet No.:
Project No.:	Stock Code:	
Status:	Current	
A2	D303-0019	Rev C