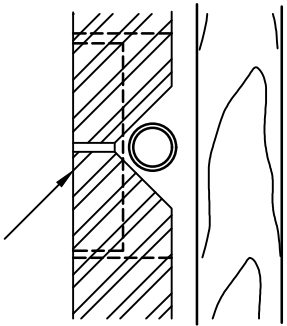
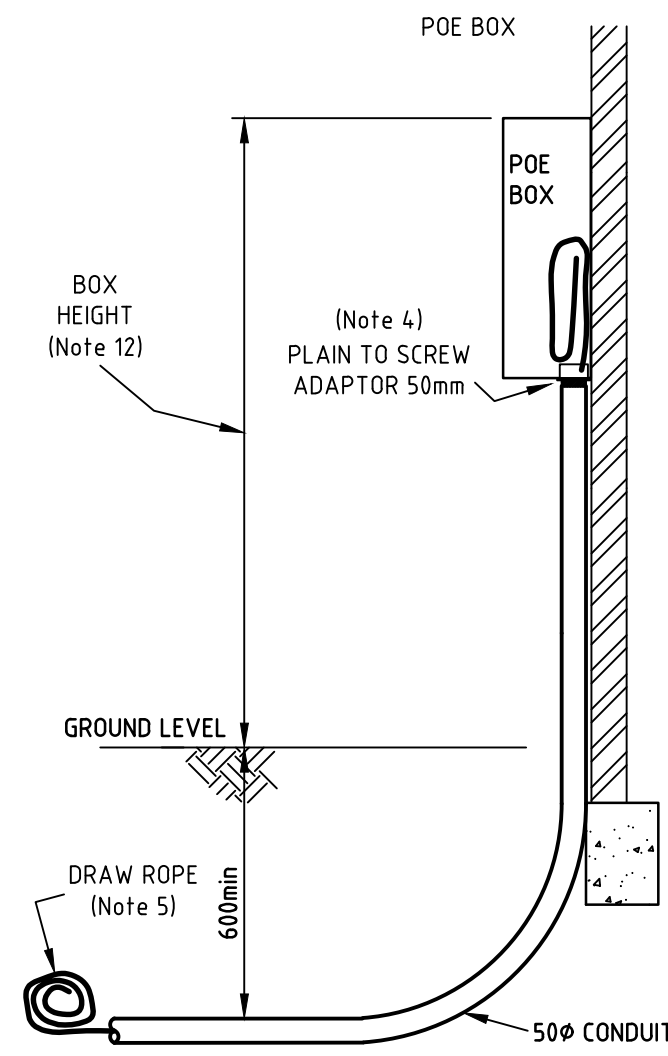


RECESSED INSTALLATION OPTION
ZINCSEAL MATERIAL, EARTHING REQUIRED AS PER P007174
FUSES CAN BE FIXED AND REMOVED WITHOUT REMOVING POE
(PREFERRED OPTION FOR NEW INSTALLATIONS)



SECTION A-A



WALL MOUNT INSTALLATION OPTION
THERMOPLASTIC MATERIAL, NO EARTHING REQUIRED
BACKING PLATE MUST BE REMOVABLE WITHOUT REMOVING POE
(ALTERNATE OPTION FOR EXISTING INSTALLATIONS/ MODIFICATIONS)

- NOTES:**
- ALL POINTS OF ENTRY & CONDUITS ROUTES SHALL BE DETERMINED BY THE SERVICE MARKER OR BE AS SHOWN ON THE APPROVED BUILDING PLAN OR APPROVED CONDUIT REQUEST DRAWING.
 - A MARKER PEG SHALL BE PROVIDED TO INDICATE THE END OF THE CONDUIT.
 - CONDUIT ENDS SHALL BE PLUGGED OR CAPPED TO PREVENT THE ENTRY OF FOREIGN MATERIAL.
 - THE CONDUIT SHALL ENTER THE POE/METER BOX USING PROPER ADAPTER ARRANGEMENT WITH NO SHARP EDGES AGAINST CABLES.
 - A CONTINUOUS DRAW ROPE OF MINIMUM 6mm DIAMETER WITH 600mm SPARE AT EACH END SHALL BE PROVIDED IN EACH CONDUIT.
 - THE CONDUIT SHALL NOT CONTAIN ELBOWS AND BENDS SHALL HAVE A MINIMUM BENDING RADIUS OF 450mm.
 - THE SUM OF CONDUIT BEND ANGLES SHALL NOT EXCEED 90° IN A SINGLE RUN.
 - THE POE/METER BOX SHALL HAVE SUFFICIENT SPACE FOR THREE SERVICES FUSES(100A) AND A SERVICE NEUTRAL LINK.
 - THE NEUTRAL LINK MUST BE SUITABLE FOR 2x16-35mm² CABLE AND MUST HAVE TWO SCREWS PER TERMINAL.
 - THE CONDUIT AND POE/METER BOX SHALL BE ISOLATED FROM THE TIMBER FRAME WITH DAMP-PROOF MATERIAL.
 - THE CONDUIT SHALL BE 50mmφ AND SHALL BE CATEGORY "A" HEAVY DUTY RIGID ORANGE CONDUIT TO AS2053. WHERE EXPOSED TO SUN, CONDUIT COVER TO BE INSTALLED OR UV RATED GRAY CONDUIT TO BE USED.
 - SEE DRAWING 8912-03 AND THE SERVICE AND INSTALLATION RULES FOR DRAINAGE DETAILS WHERE REQUIRED.
 - INSTALLATION HEIGHT FOR:
POE BOX (DOMESTIC INSTALLATION) 2300mm - 2800mm TO TOP OF BOX
METER BOX (DOMESTIC INSTALLATION) 1500mm - 2000mm TO TOP OF BOX
 - ALL CABLE ENTRY/EXIT HOLES MUST BE SEALED WITH SILICON SEALANT OR A SIMILAR SEALANT.
 - SEE DRAWING 8913-22-02 FOR DETAIL ON RECESSED MOUNT AND WALL MOUNT POE/FUSE BOX.
 - THE POE BOX WILL BE SUBJECTED TO PULL FORCE DURING CABLE HAULING, THEREFORE INSTALLER TO ENSURE THE POE BOX IS AFFIXED FIRM TO THE WALL, USING BOLTS OR SCREWS.
 - FOR FURTHER REFERENCES, PLEASE SEE FOLLOWING DOCUMENTS:
P007173 EVOENERGY SERVICE AND INSTALLATION RULES
P00793 EVOENERGY CIVIL WORKS MANUAL VOL 2
P007174 EVOENERGY LOW VOLTAGE POINT OF ENTRY CUBICLE REQUIREMENTS

0	STANDARD NUMBER UPDATED	7/12/2020	N. Azizi	W. Cleland	Drawn:	Designed: A-NNR	<p>UNDERGROUND SERVICE CONDUIT REQUIREMENTS FOR RECESSED / WALL MOUNT POE / FUSE BOX</p>	Scale:	Date: 16/03/1999	Sheet No:
P	REFERENCE DOCUMENT NUMER AMENDED - KV	7/02/2022	N. Azizi	W. Cleland	Checked:			Work Pack No:	File:	
Q	UPDATED NOTES & WALL MOUNT OPTION (MS)	19/07/2022	N. Azizi	W. Cleland	Approved: A-NNR			Status:	Current	
R	REFERENCES ADDED IN NOTES	2/07/2024	J. Primmer	N. Azizi	Project No:					
No	Revision	Date	Checked	Approved				A3	8912-02	Rev R
The information contained within this drawing & associated electronic file shall remain the property of Evoenergy and shall not be copied or used for any other purpose without express written permission from Evoenergy. © Evoenergy. 2017.					ACT Cadastral information supplied by the ACT Environment & Sustainable Development Directorate. © ACT Gov. 2017.					