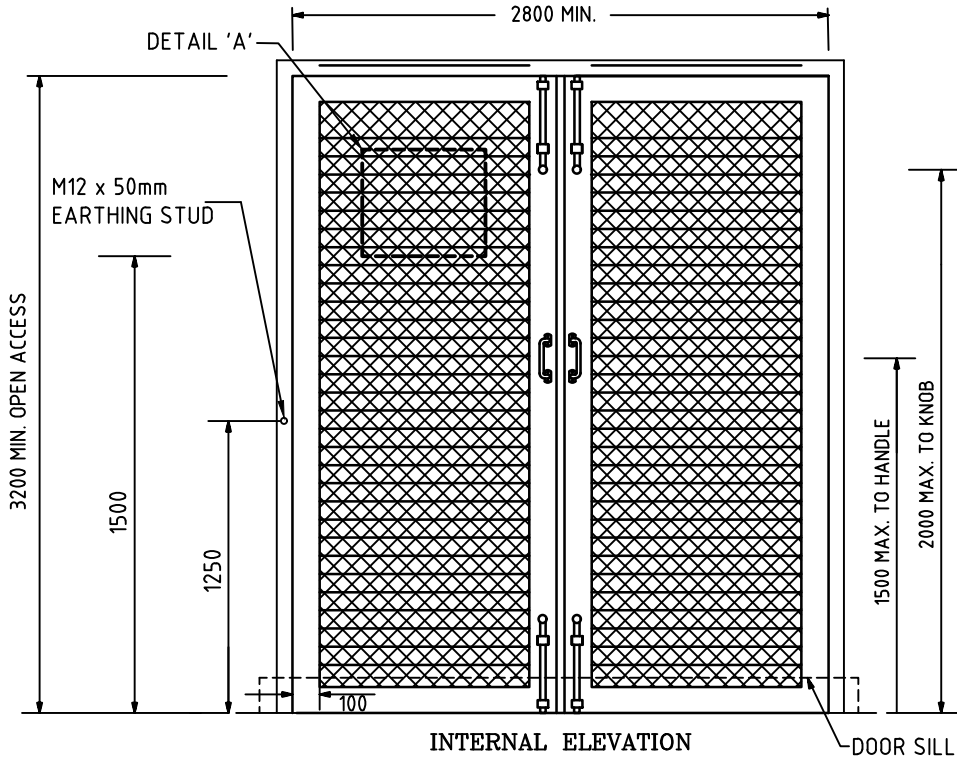


# LOUVRE DOORS, EQUIPMENT, ACCESS

TYPICAL CONFORMING DOORS (alternatives considered)

SHOP DRAWINGS FOR ALTERNATIVES ARE TO BE PRESENTED TO EVOENERGY FOR REVIEW AND APPROVAL



### HINGES:-

STAINLESS STEEL FIXED PIN HINGES  
Min. 3 / DOOR LEAF 100 X 100 x 2.6  
MINIMUM SIZE 'LANE', 'TRIO' OR EQUAL.

### DOOR STRUCTURE:-

DOOR CONSTRUCTION TO BE ROBUST AND DURABLE.

### LOUVRES & VERMIN PROOFING:-

WEATHER PROOF SAFETY LOUVRES TO RESTRICT OBJECTS BEING PUSHED BETWEEN THE BLADES. McKECHNIE No.9517 OR APPROVED EQUAL. VERMIN PROOFING ALUMINIUM 'OMAMESH' CA1615 OR 'EXPAMET' 09.16AL.

### PANEL HANDLES:-

PROVIDE 'D' TYPE 175x19φ MINIMUM OFFSET LIFTING HANDLES WITH FIXING PLATES (DORIC DN42 OR SIMILAR). HANDLES ARE TO BE SECURED TO THE PANELS TO ENSURE ADEQUATE FINGER CLEARANCE.

### MEETING STYLE:-

OVERLAPPING ALUMINIUM 30 x 30 x 3'T'

### FIXED LEAF BOLTS:-

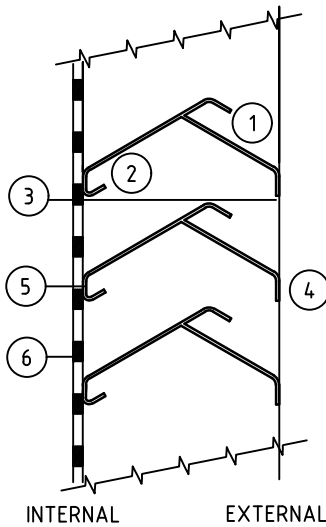
TOP - SKELETON PAD BOLT 'DALCO' 1791 WITH LOCKING PLATES SEE DETAIL FOR LENGTH  
BOTTOM - SKELETON BOLT 'DALCO' 1791 300LG.

### DOOR OPERATION:-

DOOR TO OPEN OUT TO APPROX 180 DEGREES

### THRESHOLD & BUND:-

100 x 100 MINIMUM MASONRY BUND  
EVOENERGY TO INSTALL



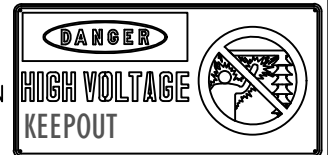
### LOUVRES:- APPROX. 90W x 60 PITCH.

1. TRAP No.1
2. TRAP No.2
3. OBSCURED SIGHT LINE
4. STIFFENED OUTSIDE EDGE
5. FLAT BLADE EDGE FOR FIXING MESH
6. VERMIN PROOF MESH

### AUSTRALIAN STANDARDS

SAFETY SIGNS AS1319  
"DANGER HIGH-VOLTAGE-KEEP OUT"  
WITH SYMBOL 350W x 1755H - ENA DOC 015

DETAIL 'A'  
SAFETY SIGN



### EVOENERGY REQUIREMENTS

DIRECTION OF SWING	TO SWING IN THE DIRECTION OF ESCAPE (PUSH OUTWARDS)
ELECTRIC DOOR RELEASE	NOT PERMITTED
BUND	100 x 100 MINIMUM MASONRY BUND SILICON SEAL TO SILL & WALL
EXIT SIGN	EXIT SIGNS SHALL COMPLY WITH THE REQUIREMENTS OF AS2293.3
EARTHING STUD	TO BE WELDED IF STEEL DOOR/FRAME. USE AUSTENITIC STAINLESS STEEL M12X50MM (OR SUITABLE LENGTH) NUTSERT/BOLT ASSEMBLY FOR ALUMINIUM DOOR/FRAME TO ESTABLISH SECURE EARTH BONDING CONNECTION.

ALL DIMENSIONS IN MILLIMETRES

C	UPDATED AS PART OF CHAMBER SUBSTATION STANDARDS REVIEW	29/11/2017	C. Desai	W. Ibrahim	The information contained within this drawing & associated electronic file shall remain the property of Evoenergy and shall not be copied or used for any other purpose without express written permission from Evoenergy. © Evoenergy. 2018. ACT Cadastral information supplied by the ACT Environment & Sustainable Development Directorate. © ACT Gov. 2018.
D	LOGO AND REFERENCES UPDATED	18/03/2018	B. Suthar	W. Ibrahim	
E	DOOR HANDLE & LOCKING MECHANISM UPDATED	14/11/2018	F. Hunnemann	W. Ibrahim	
F	EARTHING REQ. ADDED & SIGNAGE HEIGHT SPECIFIED - KV	2/08/2021	N. Azizi	W. Cleland	
No	Revision	Date	Checked	Approved	

**evoenergy**

LOUVRE DOOR (DOUBLE) FOR  
INDOOR CHAMBER  
SUBSTATION

Drawn:	Date:
Designed: A-NNR	
Checked:	
Approved: FRASER	

Project No:	Status: Current	A4	4951-29	REV F
Work Pack No:	File:			