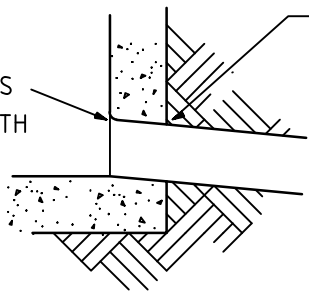
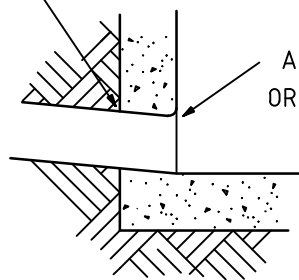


ROUND OFF ALL EDGES TO APPROX' 25mm RADIUS OR PROVIDE BELL-MOUTH



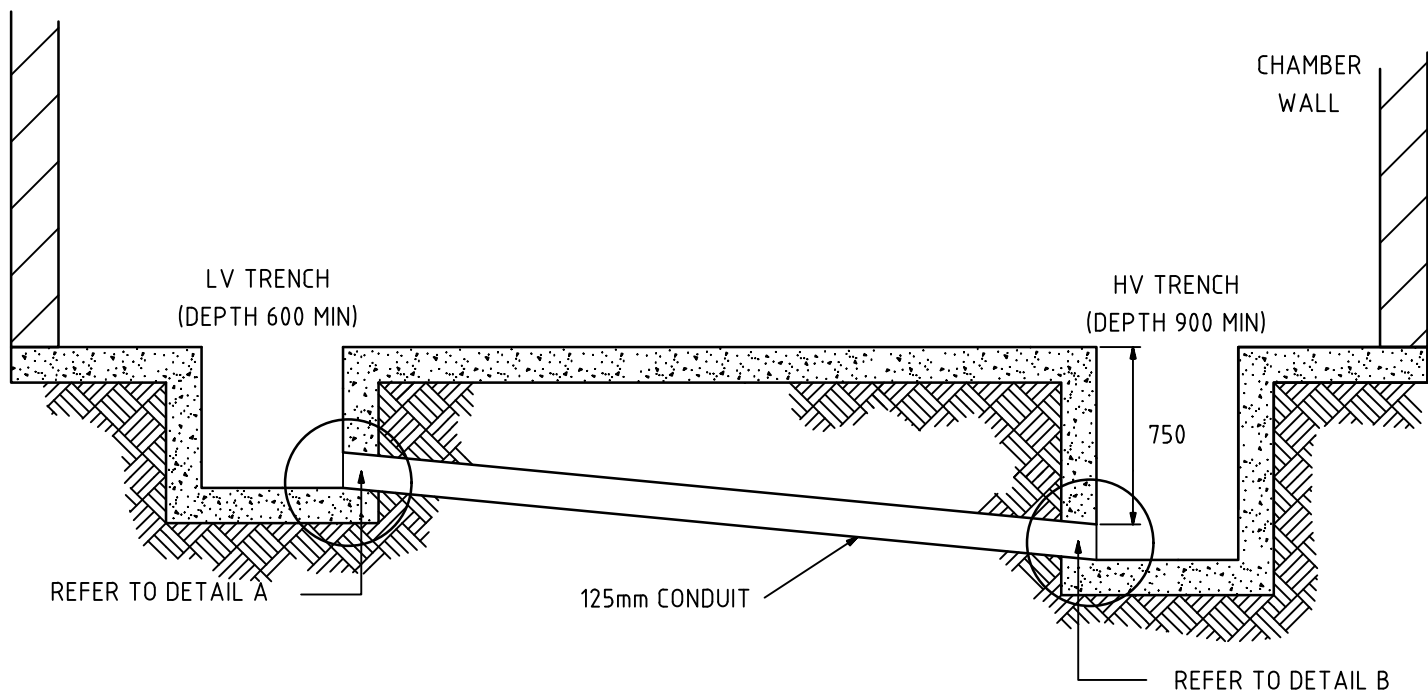
DETAIL A

WATER PROOF SEAL AROUND CONDUIT



DETAIL B

ROUND OFF ALL EDGES TO APPROX' 25mm RADIUS OR PROVIDE BELL-MOUTH



NOTES:

1. ALL SHARP EDGES TO BE REMOVED.
2. CLEAN OUT ALL CONDUITS ON COMPLETION OF INSTALLATION.
3. CONDUITS TO BE AT 90 DEG TO TRENCH DIRECTION.

					The information contained within this drawing & associated electronic file shall remain the property of Evoenergy and shall not be copied or used for any other purpose without express written permission from Evoenergy. © Evoenergy. 2018. ACT Cadastral information supplied by the ACT Environment & Sustainable Development Directorate. © ACT Gov. 2018.
C	LOGO AND REFERENCES UPDATED	18/03/2018	B. Suthar	W. Ibrahim	
B	UPDATED AS PART OF CHAMBER SUBSTATION STANDARDS REVIEW	29/11/2017	C. Desai	W. Ibrahim	
No	Revision	Date	Checked	Approved	

evoenergy		Drawn:	Date:
HV TRENCH TO LV TRENCH CONDUITS FOR CHAMBER SUBSTATIONS		Designed:	A-NNR
		Checked:	
		Approved:	FRASER
Project No:	Status: Current	A4	4931-11
Work Pack No:	File:		