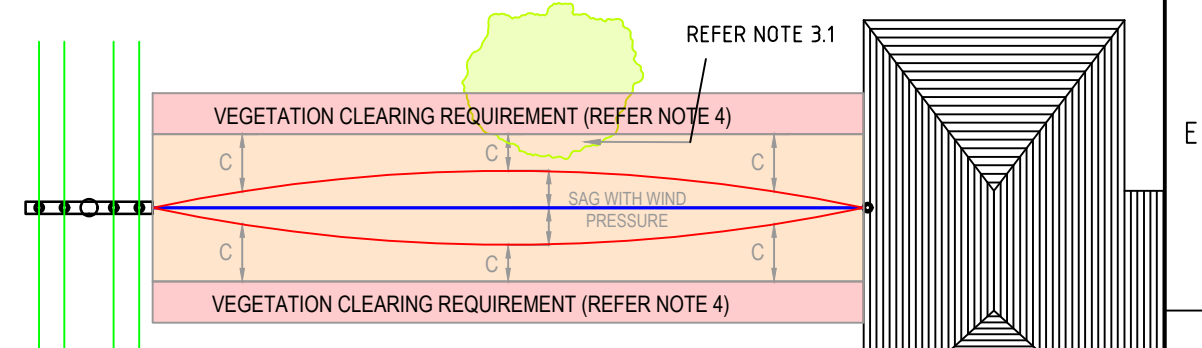
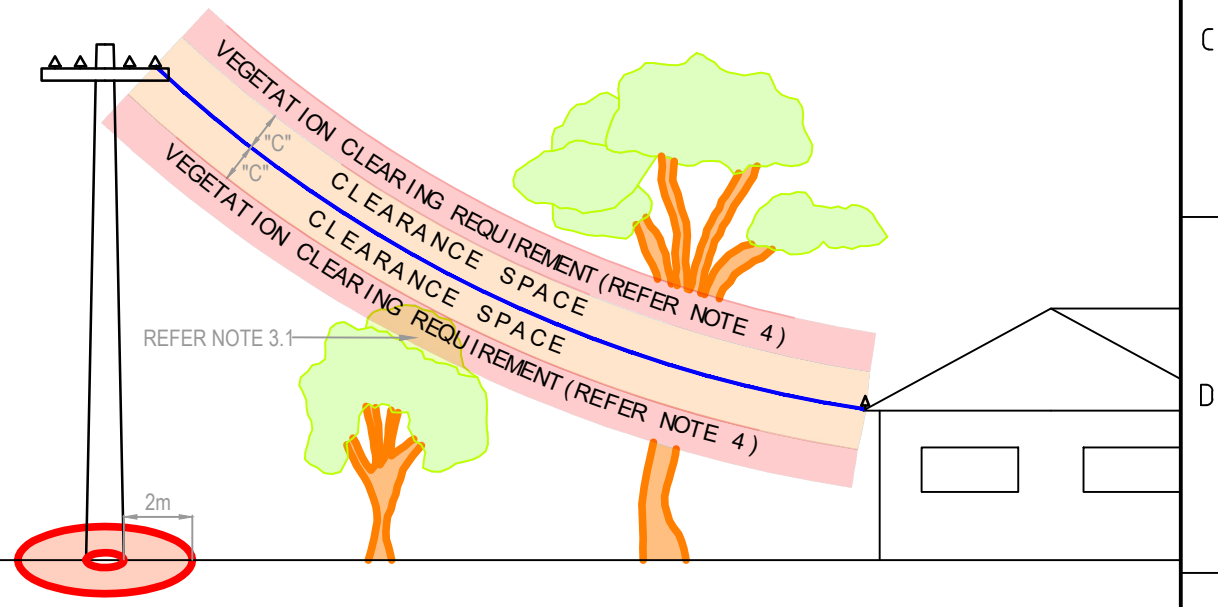


REFER TO NOTE 1

TABLE : VEGETATION CLEARANCE REFERENCE TABLE ("C")				
AREA	INFRASTRUCTURE TYPE	MINIMUM CLEARANCE FROM AERIAL LINES	SPECIAL REQUIREMENTS	VEGETATION PERMITTED TO OVERHANG AERIAL LINES
URBAN	LV INSULATED SERVICE LINES	1.0m*	THE MINIMUM DISTANCE FROM ANY PART OF AN AERIAL LINE IS TO BE MEASURED FROM THE NEAREST POINT TO WHICH THE LINE SAGS OR SWINGS. * ADDITIONAL 0.5m CLEARANCE TO BE ADDED TO ALL BARE CONDUCTOR CLEARANCES FOR BUSH FIRE PRONE AREAS.	YES
RURAL	LV INSULATED SERVICE LINES	1.5m*	THE MINIMUM DISTANCE FROM ANY PART OF AN AERIAL LINE IS TO BE MEASURED FROM THE NEAREST POINT TO WHICH THE LINE SAGS OR SWINGS. * ADDITIONAL 0.5m CLEARANCE TO BE ADDED TO ALL BARE CONDUCTOR CLEARANCES FOR BUSH FIRE PRONE AREAS.	NO
URBAN OR RURAL	BARE/INSULATED LV DISTRIBUTION NETWORK	1.5m*	THE MINIMUM DISTANCE FROM ANY PART OF AN AERIAL LINE IS TO BE MEASURED FROM THE NEAREST POINT TO WHICH THE LINE SAGS OR SWINGS. * ADDITIONAL 0.5m CLEARANCE TO BE ADDED TO ALL BARE CONDUCTOR CLEARANCES FOR BUSH FIRE PRONE AREAS.	YES* FOR URBAN & NO* FOR RURAL

NOTES:

- TREES MUST BE PRUNED TO MAINTAIN THE MINIMUM CLEARANCE; FOR TREES > 3m: TREE HEIGHT AND BRANCHES MUST BE PRUNED TO A HEIGHT EQUAL TO THE CLEARANCE FROM THE POLE.
- SAG MUST BE CHECKED WHEN LINE IS OPERATING AT IT'S DESIGN TEMPERATURE RATING.
- OVERHEAD LINES LOCATED IN BUSHFIRE PRONE AREAS OR BUSHFIRE ABATEMENT ZONES;
 - BRANCHES MUST NOT OVERHANG IN " NO TREE ZONE" AND THE AERIAL LINES MUST BE CLEAR TO SKY.
 - VEGETATION AND HEAVY FUEL MATERIALS MUST BE SUFFICIENTLY CLEAR OF POLES TO PERMIT INSPECTION AND LIMIT DAMAGE DURING BUSHFIRE.
 - MINIMUM CLEARANCE OF 2m MUST BE MAINTAINED AROUND THE POLE IN ALL DIRECTIONS AND TO BE CONSIDERED AS NO TREE ZONE.
- ALL PRUNING MUST COMPLY WITH AS4373 PRUNING OF AMENITY TREE STANDARD.
- WELL MAINTAINED GRASS AND SHRUBS UP TO 1m HEIGHT ARE ALLOWED IN NO TREE ZONE.



		Drawn: K. Vedanti	Designed: K. Vedanti		<p>VEGETATION CLEARANCE REQUIREMENTS FOR EVOENERGY LOW VOLTAGE UNDERGROUND AND OVERHEAD NETWORK ASSETS IN ACT</p>	Scale: N.T.S	Date: 17/03/2022	Sheet No:	
A	VEGETATION CLEARANCES AMENDED	30/09/2022	N. Azizi	W. Cleland		29/06/2022	Work Pack No:	File:	Status: Current
B	OVERHAND DETAIL AMENDED IN TABLE - KV	16/11/2022	N. Azizi	W. Cleland		29/06/2022	<p>A3 3811-017 Rev B</p>		
No	Revision	Date	Checked	Approved		Project No:			

The information contained within this drawing & associated electronic file shall remain the property of Evoenergy and shall not be copied or used for any other purpose without express written permission from Evoenergy. © Evoenergy. 2018.